

SPITI WINTER - EXCLUSIVE ESCAPE



STARTING ₹24,999/- | 6N/7D



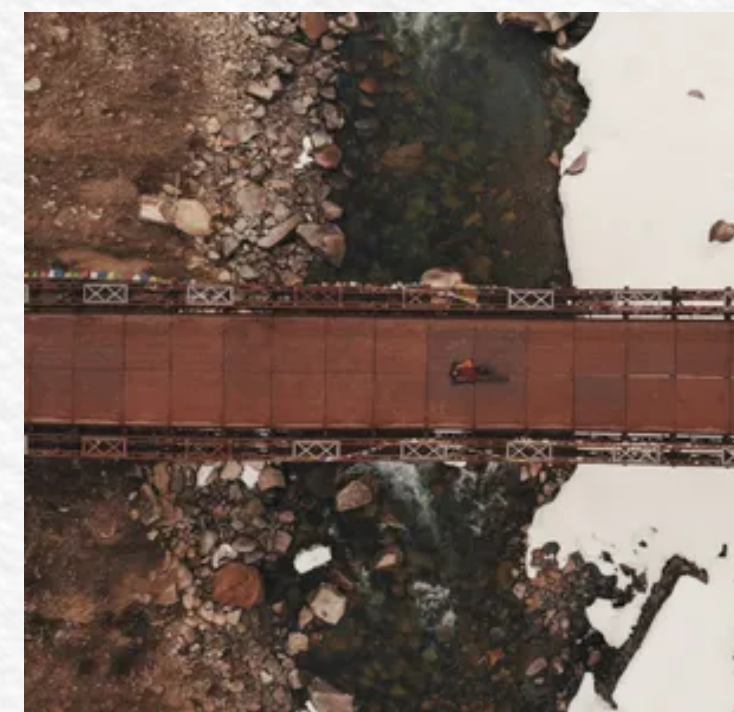
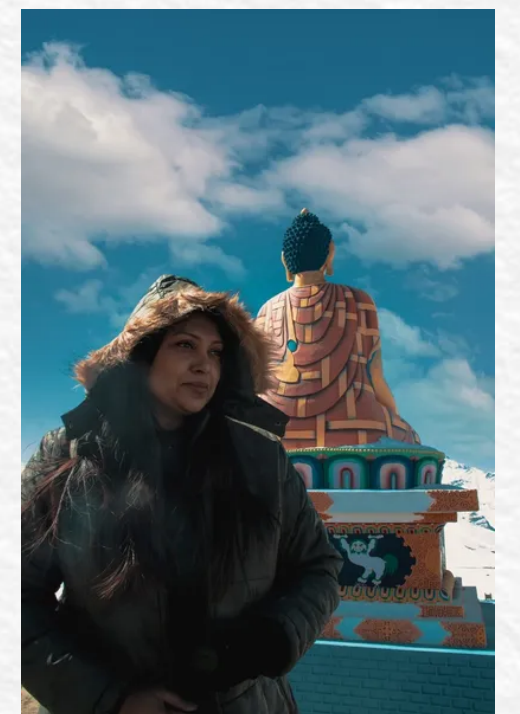
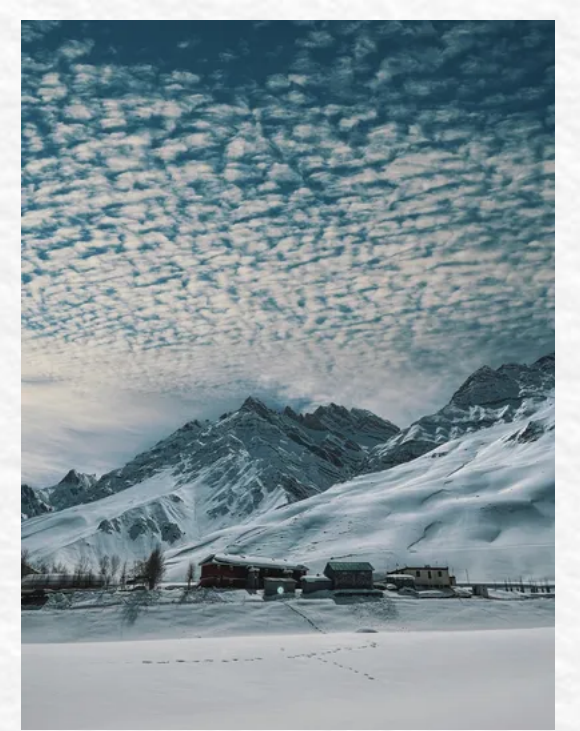
+91-8887756502/+91-9870301533 | hello@wanderon.in | www.wanderon.in

ABOUT THE PLACE

Spiti - The White Wonder As unique as its name, a trip to Spiti Valley is an experience of the ultimate deserted beauty! Separated from fertile Lahaul by the soaring 4551m Kunzum La, the Himalayan region of Spiti is another chunk of Tibet marooned in India. Enjoy the snow-clad vistas of this gorgeous cold desert. That is exactly what our Winter Edition –Spiti Valley Tour Package for 2024 is all about.

Scattered villages in a saw-toothed moonscape arriving like mirages on your trip to Spiti will surely make you forget about any other panorama you've ever seen. The whitewashed mud-brick homes along with the perched Key Monastery looks exceptionally out of the world when they are all laced with snow.

Spiti Valley is the place to revive love for the long lost things. This could be sending a postcard from the highest post office in the World, or go fossil hunting in the villages of Spiti. One such fossil village-Langza welcomes you with a life size golden statue of Buddha. The sedimentary rocks of this village hide remains of plants & marine life which are millions of years old. Go see for yourself if you're lucky enough to spot one!



BRIEF ITINERARY

DAY 0

Departure from Delhi To Shimla by evening. Overnight journey by Volvo.

DAY 1

Reach Shimla- Transfer to Kalpa via Kinnaur Gate [Distance: 210km, Duration: 8-9 Hours]. Overnight

stay at Kalpa.

DAY 2

Transfer from Kalpa to Tabo via Nako Lake [Distance: 168km, Duration: 7-8 Hours]. Overnight stay at

Tabo.

DAY 3

Visit Dhankar Monastery ,Key Monastery, Chicham Bridge [Distance: Approx 125km, Duration: 6-7

Hours]. Overnight stay at Kaza.

DAY 4

Visit Hikkim, Komik & Langza [Distance: Approx 80km, Duration: 6-7 Hours]. Overnight stay at Kaza.

DAY 5

Departure to Kalpa via Lingti Waterfall [Distance: Approx 215km, Duration: 8-9 Hours]. Overnight stay

at Kalpa.

DAY 6

Drive to the Last Indian Village - Chitkul [Distance: Approx 80km, Duration: 6-7 Hours]. Overnight stay

in Rakcham/Sangla.

DAY 7

Depart to Shimla [Distance: Approx 220km, Duration: 9-10 Hours].Overnight transfer to Delhi.



DAY 1

Reach Shimla- Transfer to Kalpa via Kinnaur Gate [Distance: 210km, Duration: 8-9 Hours]. Overnight stay at Kalpa.

- Leave from Delhi by night and reach Shimla the next morning.
- Breakfast and freshen up at Narkanda.
- Drive through Narkanda , Rampur along the Indo-Tibetan highway on the way to Kalpa.
- Enter the Kinnaur valley by crossing Kinnaur Gate (The rock tunnel is famously called as the Gateway of Kinnaur, situated around 170 kms from Shimla on the Shimla - Kaza road, also known as the Hindustan - Tibet road.)
- Reach Kalpa by evening. Dinner and Overnight sleep.



DAY 2

Transfer from Kalpa to Tabo via Nako Lake [Distance: 168km, Duration: 7-8 Hours]. Overnight stay at Tabo.

- Wake up early morning & after breakfast start your journey to Spiti Valley.
- Cross the Ka loops to reach Nako. Visit Nako lake & have your lunch in Nako.
- Enter Spiti valley through Sumdo Border.
- Reach Tabo by evening & Visit the Oldest Monastery in Spiti Valley i.e. Tabo Monastery.
- Check-in to the homestay.: Dinner & sleep overnight.



DAY 3

Visit Dhankar Monastery ,Key Monastery, Chicham Bridge [Distance: Approx 125km, Duration: 6-7 Hours]. Overnight stay at Kaza.

- Wake up early morning and after having the breakfast, head for Dhankar Village.
- Visit Dhankar Monastery which offers a spectacular view of confluence of Spiti and Pin river.
- Visit the most scenic monastery of Spiti Valley - The Key Monastery.
- Further, drive to the highest suspension bridge in Asia - The Chicham Bridge.
- Come back to Kaza by evening.
- Dinner and sleep overnight.



DAY 4

Visit Hikkim, Komik & Langza [Distance: Approx 80km, Duration: 6-7 Hours]. Overnight stay at Kaza.

- Wake up early morning and after having the breakfast, head for Spiti valley sightseeing.
- Visit the iconic villages of Spiti - Hikkim(location of the World's Highest Post Office)
- Further Komik (the highest village in the world connected through a motorable road) & Langza(the site for the holy Buddha Statue)
- Come back to Kaza by evening. Dinner and sleep overnight.



DAY 5

Departure to Kalpa via Lingti Waterfall [Distance: Approx 215km, Duration: 8-9 Hours]. Overnight stay at Kalpa.

- Wake up early morning and after breakfast check-out of the hotel.
- Take a pit stop at Lingti waterfall and click some pictures here.
- Reach Kalpa by night.
- Check-in to the hotel. Dinner and Overnight rest.



DAY 6

Drive to the Last Indian Village - Chitkul [Distance: Approx 80km, Duration: 6-7 Hours]. Overnight stay in Rakcham/Sangla.

- After having breakfast and some leisure, check-out of the hotel.
- Make a visit to the famous Cliff Point of Kalpa at Roghi village
- Depart for Chitkul, the last Indian village towards China border and experience another white wonderland.
- Dinner & overnight in a hotel at Raksham/Sangla



DAY 7

Depart to Shimla [Distance: Approx 220km, Duration: 9-10 Hours]. Overnight transfer to Delhi.

- Wake up early morning and after breakfast depart for Shimla.
- Reach Shimla by evening.
- Depart for Delhi.

INCLUSIONS

- ✓ Volvo transfer from Delhi to Shimla & back.
- ✓ Entire sightseeing by tempo traveler. Accommodation for 6 nights – 1 Night at Chitkul, 2 Nights at Kalpa, 2 Nights at Kaza & 1 Night at Tabo.
- ✓ A total 12 meals – 1 Meal on Day 1 (Dinner) + 2 Meals on Day 2 (Breakfast + Dinner) + 2 Meals on Day 3 (Breakfast + Dinner) + 2 Meals on Day 4 (Breakfast + Dinner) + 2 Meals on Day 5 (Breakfast + Dinner) + 2 Meal on Day 6 (Breakfast + Dinner), 1 Meal on Day 7 (Breakfast)
- ✓ All inner line permits for the trip.
- ✓ Driver Night Charges, Toll Tax, Parking Charges, etc.
- ✓ Team Captain throughout the trip.
- ✓ An Oxygen Cylinder 24X7 in the car in case of emergency

EXCLUSIONS

- ✘ GST (5%) is applicable extra.
- ✘ Any kind of food or beverage that is not included in the package like alcoholic drinks, mineral water, meals/refreshments/lunches on the highway.
- ✘ Any personal expenses like a tip to the drivers, entry to monuments/monasteries, camera/video camera charges, laundry, telephone bills, tips, etc
- ✘ Any cost arising due to natural calamities like landslides, roadblocks etc. (to be borne directly by the customer on the spot)
- ✘ Anything not mentioned in the inclusions.

BOOKING PROCESS

Double Sharing	₹26,999/-
Triple Sharing	₹24,999/-

Pay **₹8,000** per head to reserve your seat & you can pay the remaining amount 15 days before the trip.

BATCHES

Batch 1	29 th Mar, 2024 - 06 th Apr, 2024
Batch 2	06 th Apr, 2024 - 14 th Apr, 2024
Batch 3	13 th Apr, 2024 - 21 st Apr, 2024
Batch 4	20 th Apr, 2024 - 28 th Apr, 2024
Batch 5	27 th Apr, 2024 - 05 th May, 2024
Batch 6	05 th Oct, 2024 - 13 th Oct, 2024
Batch 7	12 th Oct, 2024 - 20 th Oct, 2024
Batch 8	19 th Oct, 2024 - 27 th Oct, 2024
Batch 9	26 th Oct, 2024 - 03 rd Nov, 2024
Batch 10	02 nd Nov, 2024 - 10 th Nov, 2024
Batch 11	09 th Nov, 2024 - 17 th Nov, 2024
Batch 12	16 th Nov, 2024 - 24 th Nov, 2024

BATCHES

Batch 13	23 rd Nov, 2024 - 01 st Dec, 2024
Batch 14	30 th Nov, 2024 - 08 th Dec, 2024
Batch 15	07 th Dec, 2024 - 15 th Dec, 2024
Batch 16	14 th Dec, 2024 - 22 nd Dec, 2024

NOTES

- Access to high altitude regions of Spiti Valley, especially Hikkim, Komik, Langza Village and Pin Valley etc may be blocked during winter months due to excessive snowfall. Hence, the visit to these locations is weather dependent. In such a case, we will look for the best possible alternatives, as feasible.
- Travellers residing outside Delhi are suggested to book trains/flights reaching Delhi not later than 4 PM on the trip start date. Similarly, on trip end date, book returning flight/trains leaving post 2 PM.
- Numerous factors such as weather, road conditions, the physical ability of participants etc. may cause itinerary change. We reserve the rights to change any schedule in the interest of safety, comfort and general wellbeing.
- The age limit of our group departures is 16 to 42 years due to the power packed itineraries that we provide to our travellers. We can customise trips for travellers beyond the mentioned age bracket.

PAYMENT PROCESS

Following mode of payments are available:

1) ACCOUNT TRANSFER

Name: WanderOn Experiences Private Limited

Account Number: 054833199001

IFSC Code: HSBC0110005

Account Type: Current

2) BY UPI

UPI ID: WanderOn@HSBC

[Cancellation](#)

[Terms & Conditions](#)

CHECK OUR REVIEWS



FOLLOW US ON INSTAGRAM FOR ONGOING TRIP STORIES AND TRAVEL CONTENT

